

# Department of Justice Criminal Injuries Compensation Statement of Impact - Quick Guide

The Statement of Impact is your opportunity to let the Assessor know how the offence has impacted upon your life. In your own words, you should explain the physical, emotional, social and financial impact of the offence.

## Physical

- Your injuries.
- The treatment you have had, or may need in the future.
- The impact of the injuries on your ability to work; play sport; engage in leisure and recreational activities; undertake activities of daily living including self-care, caring for your family and doing household tasks.
- Any permanent physical restrictions (for example, lift heavy objects, moving the body part or scarring).



## Emotional

- Any emotions or feelings such as hurt, fear, anger, shame or frustration.
- Any psychological injury (such as depression, anxiety, PTSD).
- The treatment you have had or may need in the future.
- The impact of the emotions or psychological injury on your life including on your personal relationships, your ability to work, sleep, eat, care for yourself or your family and to engage in leisure activities.

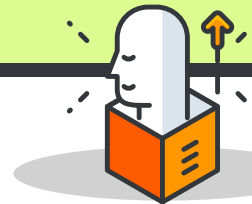


## Social

The impact on your daily life, including on:

- family life;
- spending time with friends or attending social events;
- accessing the community;
- sporting or club commitments;
- how safe you feel.

If the offence caused the death of a loved one, describe how your life has changed and how much you miss them.



## Financial

- Any clothing or personal items you were wearing that were damaged;
- loss of earnings, ensuring you provide an explanation of how your injuries impacted your work, the periods you couldn't work or were on restricted duties and any change to your role or employment;
- medical and travel expenses.

If the offence caused the death of a loved one on whom you were financially dependent explain their earnings, and what they paid for or monies they regularly gave to you.

